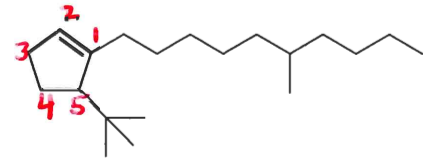
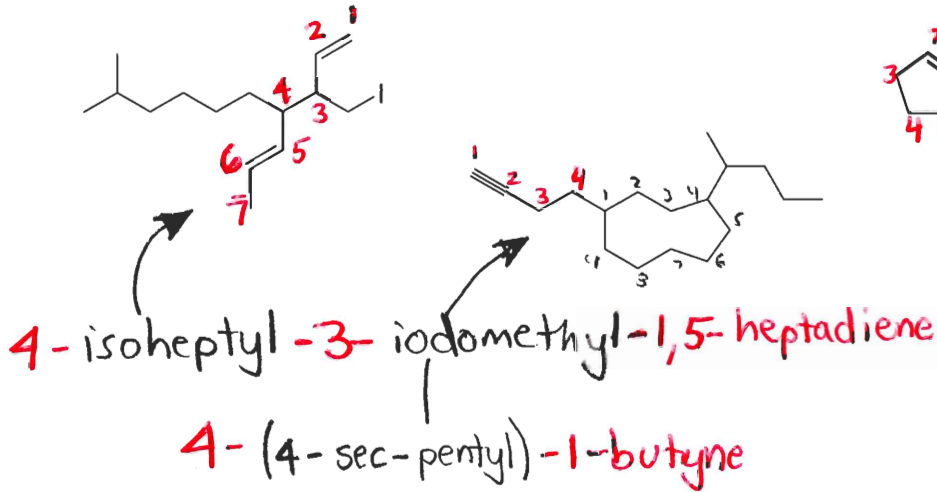


Name: _____

CHM 2430 Survey of Organic Chemistry
Quiz 6
Wednesday September 26, 2012

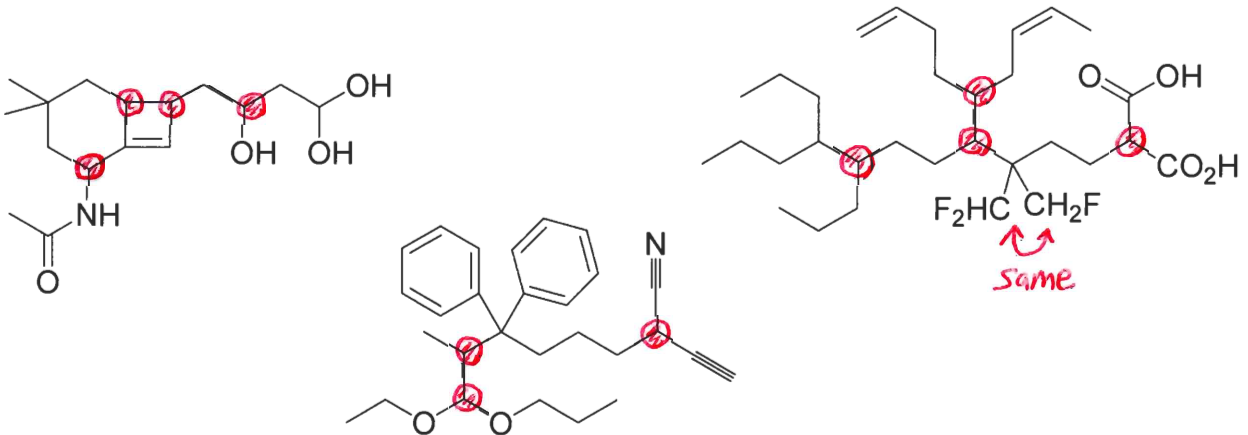
1. (2.75 points) Provide an acceptable name for ONE of the compounds below.



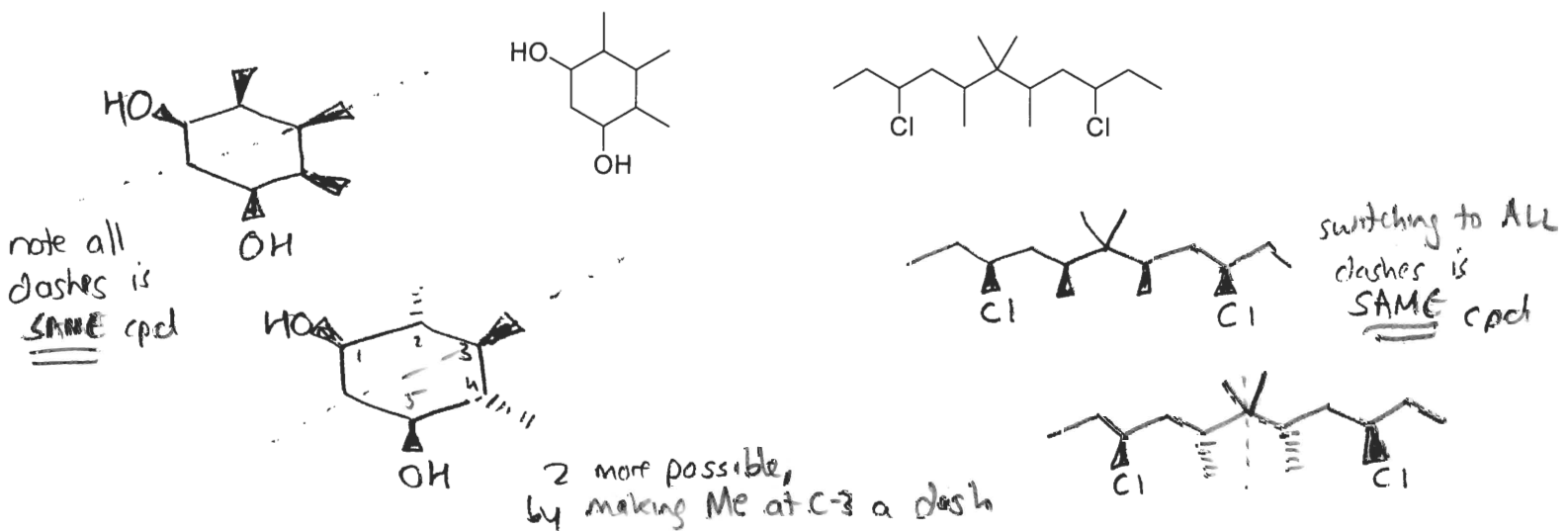
5-tert-butyl-1-(6-methyldecyl)-1-cyclopentene

2. (1.5 points) Do EITHER part (a) or part (b)

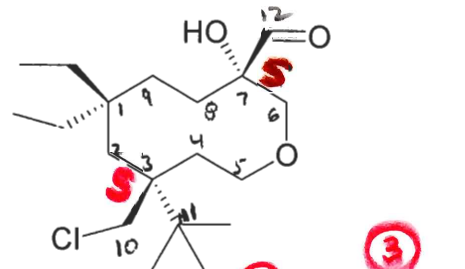
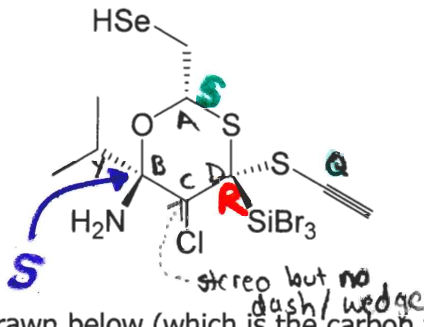
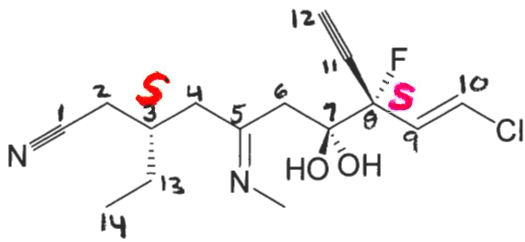
(a) Circle any and all stereocenters in one of the compounds below.



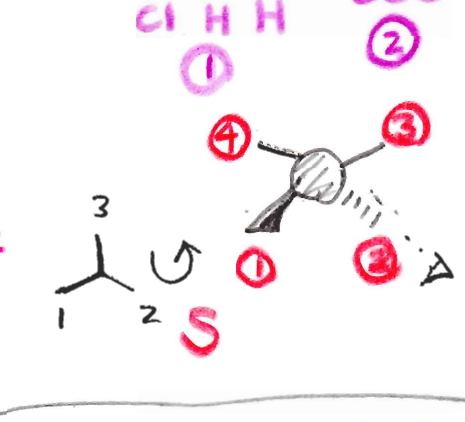
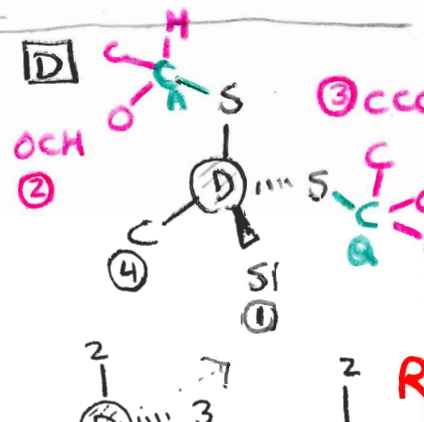
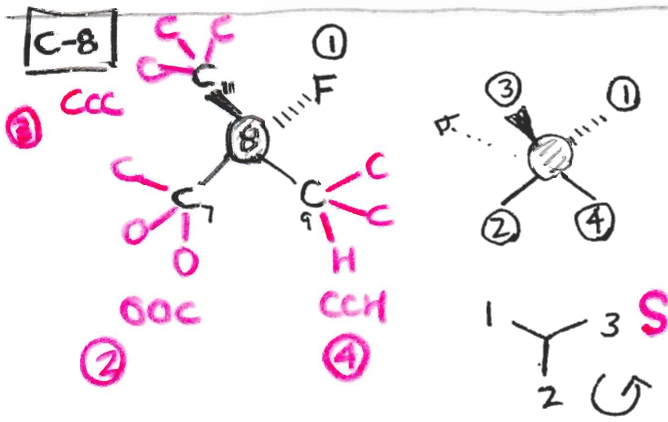
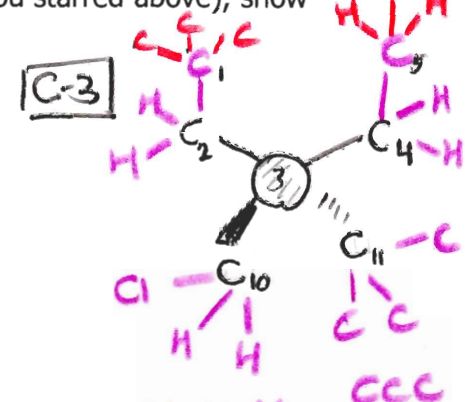
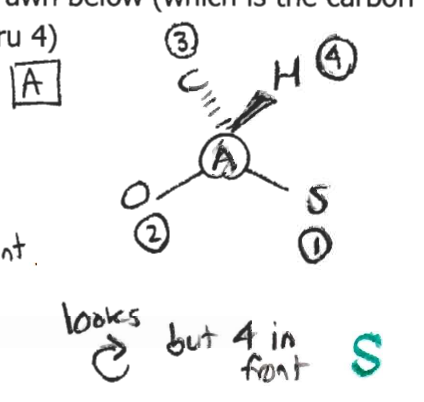
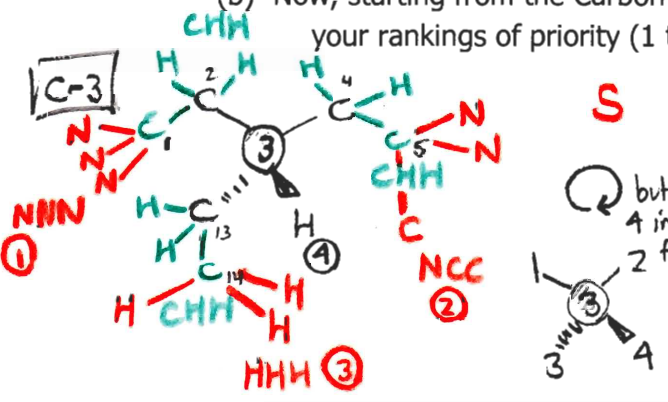
(b) Draw TWO DIFFERENT meso forms of the compound below.



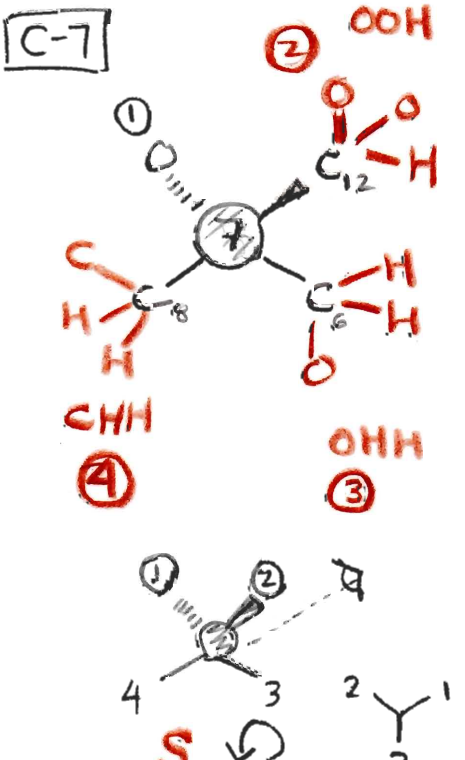
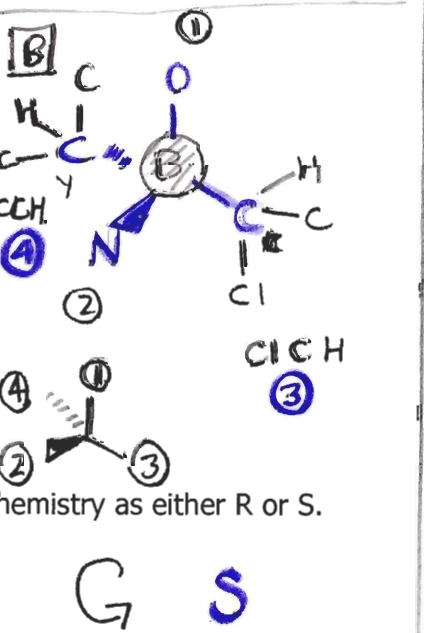
3. (3 points) (a) Choose **ONE** of the stereocenters in a compound below, and put a star by it.



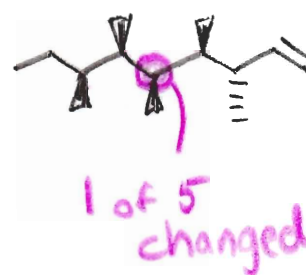
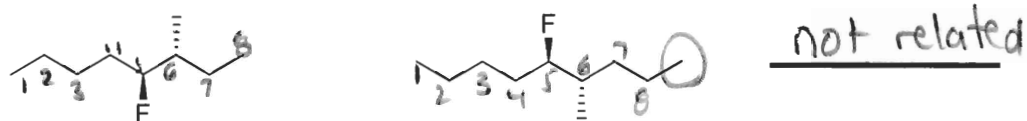
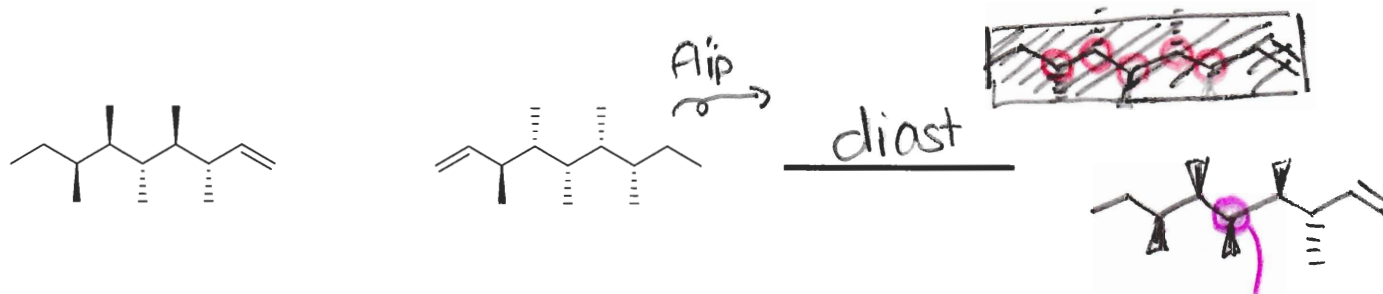
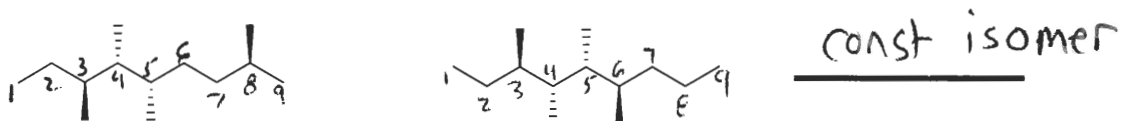
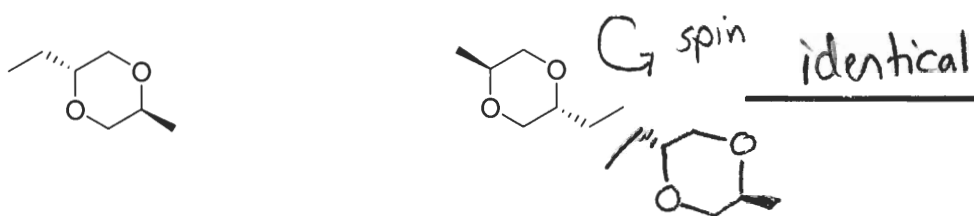
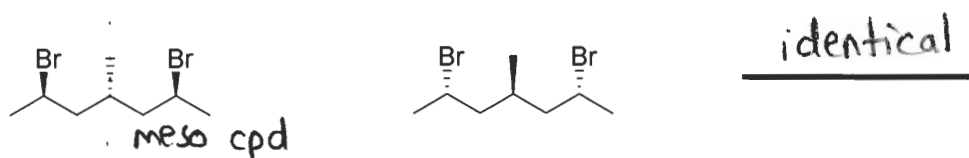
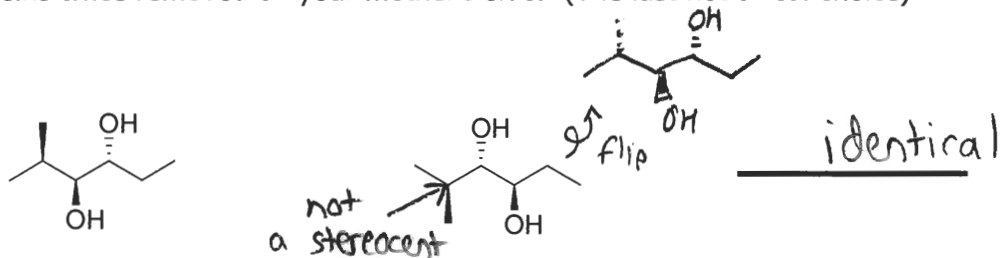
(b) Now, starting from the Carbon drawn below (which is the carbon you starred above), show your rankings of priority (1 thru 4)



(c) Now assign the absolute stereochemistry as either R or S.



4. (3.5 points) Write the relationship between TWO of the compounds below on the blanks to the right. Your choices are identical, enantiomer, diastereomer, constitutional isomer, not related, or fourth cousins twice removed on your mother's side. (The last not a real choice)



Extra credit (1 point) Do the other part of question 2. (So if you did a, do b now. You don't need to state which one you want for extra credit, I'll give you the most points possible)